

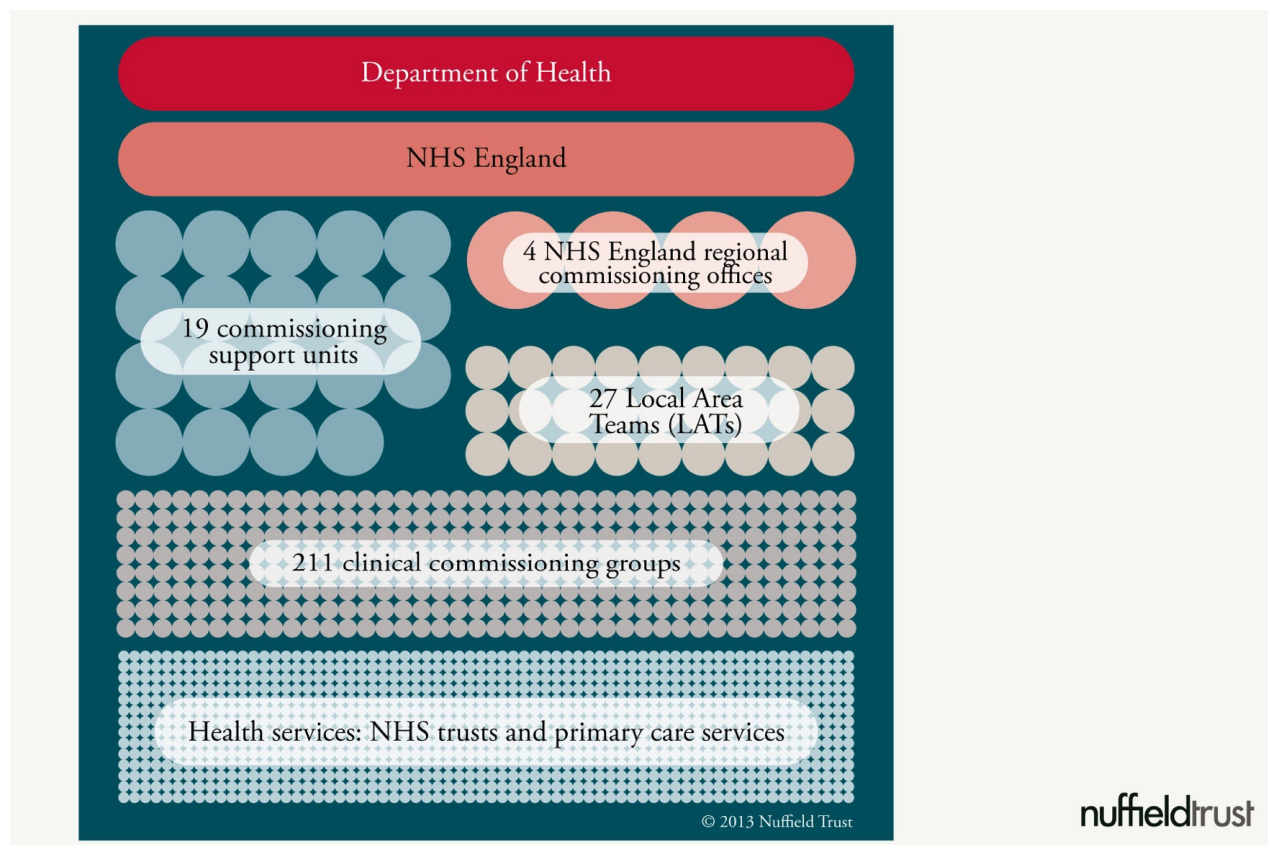
The NHS – A Basic Reference Guide

On 1 April 2013, the majority of the changes introduced by the Health and Social Care Act 2013 came into effect. This guide provides an introductory overview to the new system with particular reference to the health landscape in Kent and Medway. The focus is on organisations and structure and this is not a guide to the services offered by the NHS.

Included in this guide are four diagrams illustrating different aspects of the health sector. These have been produced by the Nuffield Trust. The full PowerPoint can be viewed here:

<http://www.nuffieldtrust.org.uk/talks/slideshows/new-structure-nhs-england>

Diagram 1: The Structure of the NHS



The Secretary of State for Health and the Department of Health

The Department of Health is a ministerial department supported by 24 public bodies and executive agencies. It leads on creating national policies and legislation across health, public health and social care. The Secretary of State has a duty to promote a comprehensive health service and is accountable to Parliament for the provision of the health service in England.

NHS England

Prior to 1 April 2013, NHS England was known as the NHS Commissioning Board. It is an executive non-departmental public body of the Department of Health. NHS England has an overarching function to support the NHS nationally and ensure the money spent provides the best possible care for patients and that national standards are drawn up and delivered consistently across the country.

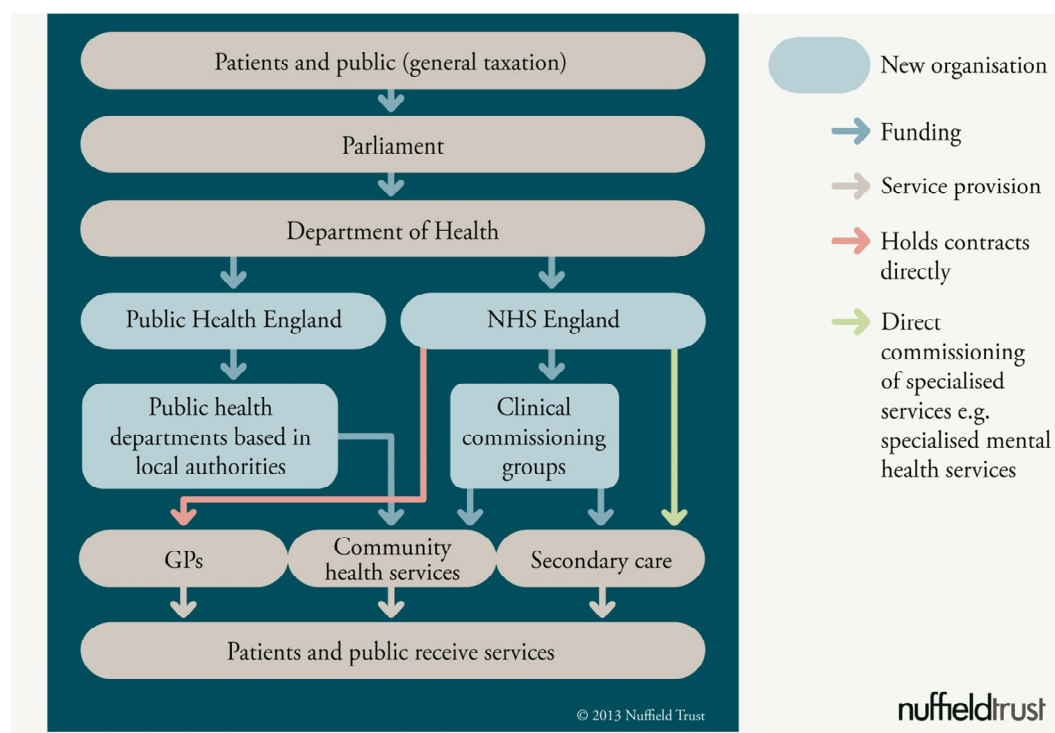
It is responsible for the overall NHS commissioning budget of around £100 billion annually. From this, the budgets for Clinical Commissioning Groups (CCGs) are provided to enable them to commission services locally. It also supports, develops and assures the CCGs.

NHS England is responsible for directly commissioning over £25 billion of health services (in 2013/14), specifically:

- Primary care services;
- Specialised services;
- Offender healthcare;
- Some services for members of the armed forces.

27 Local Area Teams of NHS England will carry out the commissioning of these services, operating to a common model.

Diagram 2: Funding Arrangements



Clinical Commissioning Groups (CCGs)

CCGs are statutory NHS organisations. They are commissioning organisations formed from general practices. All GP practices are part of a CCG and the CCG is responsible for commissioning health services for the population within the CCG boundaries. There are 211 CCGs across England and are collectively responsible for a commissioning budget of over £63 billion for 2013/14. In addition, £1.3 billion was allocated for the running costs of CCGs.

The majority of hospital, mental health and community health services will therefore be commissioned by CCGs. This includes:

- Urgent and emergency care (including ambulance services, accident and emergency, and NHS 111);
- Out of hours GP services;
- Planned hospital care;
- Community health services;
- Maternity services;
- Children's health services;
- Services for people with learning disabilities; and
- Mental health services.

There are currently 8 CCGs covering Kent and Medway, as shown in the following map.

Map 1: CCGs in Kent and Medway (produced by Local Area Team)



September 2014

Commissioning Support Units (CSUs)

While CCGs remain legally accountable for their statutory obligations, CCGs may choose to obtain support in carrying out their functions by employing in-house staff, and/or choosing to use new NHS CSUs or other sources of commissioning support.

CCGs in Kent and Medway are being supported by in-house officers and the CSU, Kent and Medway Commissioning Support (KMCS). KMCS also provide services to other health organisations such as the Kent and Medway area team and Department of Health.

Public Health England (PHE)

PHE is an executive agency of the Department of Health. It has three key business functions of delivering a nationwide health protection service, supporting local public health services and supporting the public in making healthier choices.

PHE has 15 local centres and 4 regions - North of England, South of England, Midlands and East of England, and London.

Public Health at Kent County Council

A number of public health functions transferred from the NHS to upper tier and unitary authorities on 1 April 2013, including Kent County Council. From April 2013, these authorities will have a ring fenced grant in order to undertake their new public health functions. Aside from being required to provide a small number of mandatory services, local authorities will be able to set their own priorities but are required to have regard to the Public Health Outcomes Framework.

KCC now leads on commissioning the following:

- Public health services for children aged five to 19, including school nursing
- Sexual health advice and promotion, and the testing, treatment and prevention of sexually transmitted infections (excluding HIV treatment)
- Services for mental health promotion, prevention of mental illness and suicide prevention
- Physical activity programmes and stop smoking services
- Obesity and local nutrition programmes
- Drug misuse and alcohol misuse services
- The NHS Health Check
- Falls prevention services and excess death reduction programmes
- Workplace health and other public health programmes.

September 2014

Health and Wellbeing Boards (HWBs)

The HWB is responsible for producing a Joint Strategic Needs Assessment (JSNA) and a Joint Health and Wellbeing Strategy (JHWS). JSNAs are assessments of current and future health and social care needs in a particular area alongside an identification of the assets the local community has to meet the identified need. The JHWS set out how the needs will be met, in the context of identified priorities, as well as enabling the HWB to encourage integrated working between health, public health and social care commissioners. Both documents are to inform local authority and NHS commissioning plans. Where plans are not in line, an explanation must be provided.

It is also responsible for the production of the Pharmaceutical Needs Assessment (PNA).

Kent Health and Wellbeing Board - Kent is the only County Council to have established CCG level Health and Wellbeing Boards as sub committees of its HWB; this unique approach will enable GPs, District Councils and KCC to work together to focus on local health and wellbeing needs. The CCG level HWBs will focus on developing integrated commissioning plans, local engagement and monitoring of local outcomes.

Local Healthwatch Organisations (LHOs)

Healthwatch replaced Local Involvement Networks (LINKs) on 1 April 2013. Each local authority with social services responsibilities has to commission an LHO. Unlike LINKs, LHOs also have a remit to provide information and signposting for health and social care to support choice. Their role is to be the independent consumer champion for health and social care in each area, gathering the views of local people and ensuring they are taken into account in fora such as the Health and Wellbeing Board

Healthwatch Kent (HWK) is being run by a consortium of 'Kent and Medway Citizens Advice' (KAMCA), 'Voluntary Action within Kent' and 'Activmob'. This consortium has formed a Community Interest Company (CIC) called Engaging Kent and it is this organisation with whom KCC have contracted.

Providers

A wide range of different providers will be commissioned by NHS England, KCC and CCGs in Kent and Medway to provide healthcare to the people of Kent. Not all of these services will be located and/or have their main offices in Kent. In addition, a number of providers offer services at locations other than their main locations (e.g. the Kent Oncology Centre at Kent and Canterbury Hospital is run by Maidstone and Tunbridge Wells NHS Trust). Nor will all the providers be NHS Trusts.

The following is a list of some of the main NHS providers of health services in Kent and Medway.

September 2014

Acute Hospital Trusts:

Dartford and Gravesham NHS Trust

East Kent Hospitals University NHS Foundation Trust

Maidstone and Tunbridge Wells NHS Trust

Medway NHS Foundation Trust

Mental Health Services

Kent and Medway NHS and Social Care Partnership Trust

Sussex Partnership NHS Foundation Trust

Community Health Services

Kent Community Health NHS Trust

Medway Community Healthcare

Ambulance Trusts

South East Coast Ambulance Service NHS Foundation Trust